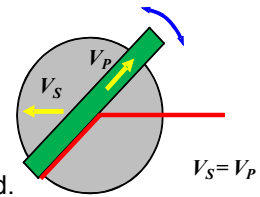


OSC 92LJ114 Versatile Peel Analyzer

Flat Plate Cross Stage method (Patented No. 4717156)

One of remarkable creation on VPA is the flat specimen plate. The peel angle is adjustable from 0° to 180° on it simply and swiftly without detaching jigs or using tools. Synchronized actuator mechanism enables to keep same peel speed and angle during the stage travel. No complex adjustments and calculation are required.



Small-footprint models

Compact designed models restricting peel speed, distance of stage travel and applicable sample size. High demand range (peel force 100N) and light loading model (peel force 5N) are available



OSC 92LJ114A ~ high demand range ~	OSC 92LJ114B ~ light loading ~
<ul style="list-style-type: none"> • Loading range 100N as standard and 50N at option • Any peel angle from 0 - 180° is adjustable. • Peel force dependency on peel angle can be obtained. • Low to high speed measurements can be done by only a cycle of stage travel. This shows constant change of peel force with peel speed. • Typical applications: PSA tape in general , Packaging film, Adhesion of labels 	<ul style="list-style-type: none"> • Loading range 5N as standard, 10N and 1N, at option • Any peel angle from 0 - 180° is adjustable. • Low peel force in the order of 0.01N can be performed. • Low peel angle tests lessening the effect by distortion of material can be performed. • Typical applications: Releasing papers/films, Sticky notes

Higher capacity models

Higher capacity models enabling to higher peel speed and long distance of stage travel. Specimen stage is also extended to support bigger plate samples

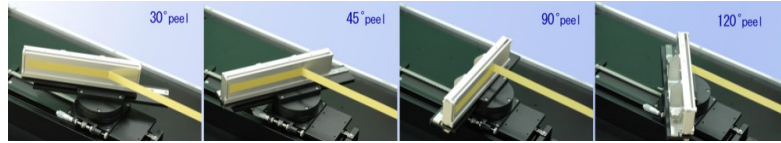


OSC 92LJ114C ~ high demand range ~	OSC 92LJ114D ~ light loading ~
<ul style="list-style-type: none"> • Loading range 100N as standard and 50N at option. • Any peel angle from 0 - 180° is adjustable. • All performances that can be done by OSC 92LJ114A and additional capacities of higher peel speed with longer travel distance. • Typical applications: PSA tape in general , Packaging film, Adhesion of labels. 	<ul style="list-style-type: none"> • Loading range 5N as standard, 10N and 1N at option. • Any peel angle from 0 - 180° is adjustable. • All performances that can be done by OSC 92LJ114B and additional capacities of higher peel speed with longer travel distance. • Typical applications: Releasing papers/films, Sticky notes.

OSC 92LJ114 Versatile Peel Analyzer

Flat plate stage of VPA

Peel angle can be changed without any extra jig and tool.



Examples of data

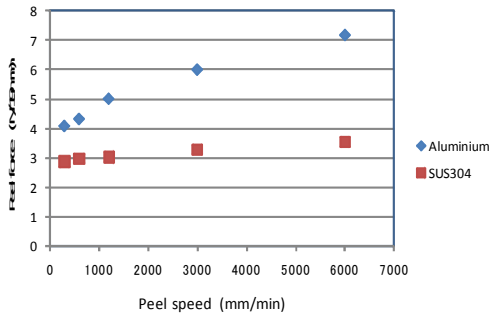


Fig.1 Peel speed dependence of peel force between polyester adhesive tape Vs. metal plates.

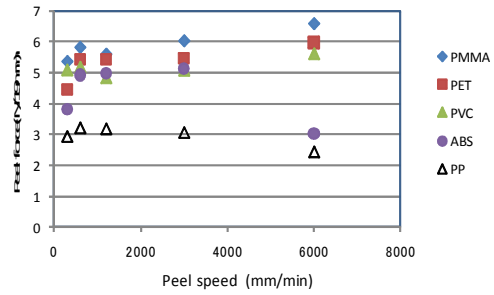


Fig.2 Peel speed dependence of peel force between polyester adhesive tape Vs. polymer plates.

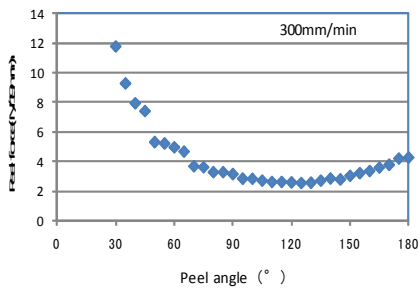


Fig.3 Peel angle dependence of peel force between polyester adhesive tape Vs. SUS304 plate.

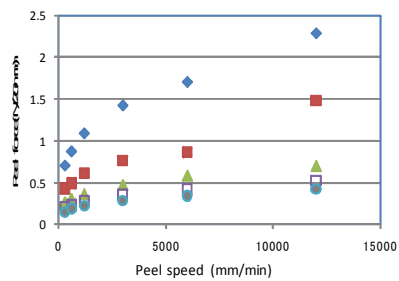





Fig.4 Peel speed dependence of peel force between label sheet Vs. release paper in various angles.

OSC 92LJ114 Versatile Peel Analyzer

Specifications

Model	OSC 92LJ 114A	OSC 92LJ 114B	OSC 92LJ 114C	OSC 92LJ 114D
Test methodology	Flat Plate Cross Stage method			
Full scale of loading	100 N (standard) 50 N (option)	5 N (standard) 10N /1N (option)	100 N (standard) 50 N (option)	5 N (standard) 10N /1 N (option)
Adherend sample conditions	Flat plate 50W x 130L x 1T mm (standard), Max. 3T mm		Flat plate 50W x 230L x 1T mm (standard), Max. 3T mm	
Size of peel area of sample	Max. 40W x 100L mm		Max. 40W x 200L mm	
Stage travel speed (Vs)	3 - 12,000 mm/min		3 - 30,000 mm/min	
Stage travel distance (Ds)	Max. 105 mm		Max. 200 mm	
Display resolution	0.01 N	0.001 N	0.01 N	0.001 N
Peel speed (Vp)	Vp=Vs (same as stage traveling speed) Peel speed does not depend on the peel angle.			
Dependency on peel speed	stairstep changes of speed in a single cycle			
Dependency on peel angle	adjustable any angle in the range 0 - 180°			
Analysis contents	Peel force Vs. Peel distance, Peel force Vs. Peel speed, Peel force Vs. Peel angle			
External dimensions	about 400D x 620W x 270H mm		about 550D x 910W x 270H mm	
Weight	about 22 kg		about 39 kg	
Power requirement	AC100 - 240V 50/60Hz 25W 65VA			
Operating environment	Temp.: 15 - 35°C, Humidity: 30 – 80%RH (non condensing)			

Option

	Tensile test holders
 for OSC 92LJ 114C/OSC 92LJ 114D Peel behavior observation system	 Load cell unit 50N, 10N, 5N, 1N
 Manual tape pressure roller	 10N for OSC 92LJ 114C/OSC 92LJ 114D
	

* The specifications and designs are subject to change without notice.